



## WP752 Centrifugal 12V pump for water glycol mix or similar viscous fluids

### In The Box:

- 1 Electric Pump #WP752
- 1 Wiring harness w/ 20 amp fuse

### To Complete the Job you will need:

- 1ea Inlet fitting for 1 1/2" NPT
- 2ea Outlet fitting for 1" NPT

### Preparing the Pump:

Make sure the pump will fit in the required space. Install the inlet and outlet fittings using teflon tape or some other appropriate pipe thread sealant. Fittings are sold separately and should be selected according to the needs of your application. Mount the pump securely and complete the plumbing. *Do not run the pump dry for an extended period of time.*

### Wiring the Pump:

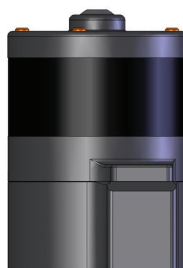
Use the fused harness supplied with the pump. The black wire should be connected to ground. The blue wire should be connected to a 12 volt positive switched source. Supply and ground wires should be 14 gauge minimum. All switches should be rated at 20 amps or better.

### General Precautions:

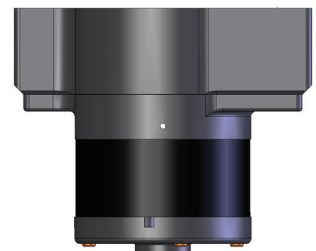
-We recommend the pump be mounted with the main shaft pointing up. Never mount the pump with the shaft pointing at the ground. It may be mounted sideways if the weep hole is pointed at the ground.

- Use appropriate torque for mounting hardware and plumbing connections.

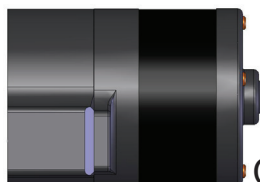
-Thread locking compound is recommended on mounting bolts and thread sealing tape is recommended on plumbing connections.



CORRECT



INCORRECT



CORRECT

California Proposition 65 Warning: Please see reverse side for Prop 65 information.

**Meziere Enterprises 220 S. Hale Ave. Escondido, CA 92029 760-746-3273**

California Proposition 65 Warning

**WARNING: This product contains chemicals known to the State of California to cause cancer and birth defects or other reproductive harm.**

**WARNING:** Motor vehicles contain fuel, oils and fluids, battery posts, terminals and related accessories which contain lead and lead compounds and other chemicals known to the State of California to cause cancer, birth defects and other reproductive harm. These chemicals are found in vehicles, vehicle parts and accessories, both new and as replacements. When being serviced, these vehicles generate used oil, waste fluids, grease, fumes and particulates, all known to the State of California to cause cancer, birth defects, and reproductive harm.

For background on the new Proposition 65 warnings, see:  
<https://www.p65warnings.ca.gov/new-proposition-65-warnings>

Proposition 65 and its regulations are posted at:  
<https://oehha.ca.gov/proposition-65/law/proposition-65-law-and-regulations>

To give Meziere notice of an alleged violation of California Health and Safety Code Section 25249.5 or 25249.6, you must send notice to:  
[meziere@meziere.com](mailto:meziere@meziere.com)