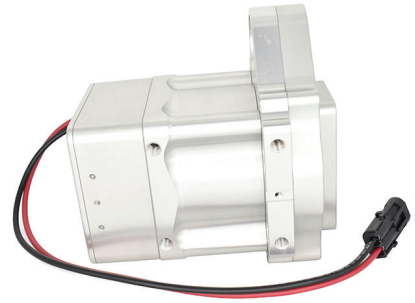




## Installation Instructions WP728



### In the box:

- 1 Pump
- 1 Wiring harness w/ 20 amp fuse

### Installation:

- Remove the pump from the package and inspect for any shipping damage.
- If this pump is to be vehicle mounted we recommend the pump be mounted so that the pump shaft is parallel to the ground. Regarding plumbing (hose size and fittings), large line sizes are always preferable and will be critical to achieve maximum performance from the system.
- Weld the mount plate to your tank low so that the inlet port will always be covered by the fluid. Verify there are no leaks. The flat side of the weld plate is out and the radiused side is in, toward the tank. After it is cool from the welding process, remove the back cover from the pump. Lubricate the o-ring and install into the groove on the back plate which interfaces with the weld plate. Attach the back cover to the weld plate. Reattach the pump to the back cover.
- Avoid mounting the pump near very hot areas or areas of extreme vibration.
- In standard configuration, this pump is shipped without speed controls. By applying voltage to the power and ground leads, the pump will immediately start up and run at full speed. The blue wire of the harness is positive (+) voltage. Voltage for the pump can be 12-18VDC. Performance is peak if voltage is 16-18V. The pump will stop if the supply voltage drops below 10V and will restart once the voltage is above 10.5V.
- Never run the pump dry! The pump seal could be damaged if it is run without coolant.
- Wire the pump to a 12-18 volt switched source making sure that a 20amp fuse or circuit breaker is utilized to protect from overloading the circuit.



### To complete the plumbing:

The outlet port on this pump is -16AN O-Ring Boss. We offer a variety of fitting options.

-12 AN – WP16012

1 ” Smooth Hose- WP16100

-16 AN – WP16016

1 -1/4” Smooth Hose- WP16125

1 -1/2” Smooth Hose- WP16150

The fitting seals to the pump with an o-ring seal. Use a little grease or oil to lubricate the o-ring before installing the fitting.

The inlet is also the mount plate. For this application an aluminum plate is supplied. If you need a steel or stainless steel plate the part numbers are: STEEL-WPX819, STAINLESS-WPX820

Thank you for purchasing our product.

Feel free to contact our technical department if we can be of further assistance.



California Proposition 65 Warning

**WARNING: This product contains chemicals known to the State of California to cause cancer and birth defects or other reproductive harm.**

**WARNING:** Motor vehicles contain fuel, oils and fluids, battery posts, terminals and related accessories which contain lead and lead compounds and other chemicals known to the State of California to cause cancer, birth defects and other reproductive harm. These chemicals are found in vehicles, vehicle parts and accessories, both new and as replacements. When being serviced, these vehicles generate used oil, waste fluids, grease, fumes and particulates, all known to the State of California to cause cancer, birth defects, and reproductive harm.

For background on the new Proposition 65 warnings, see:

*<https://www.p65warnings.ca.gov/new-proposition-65-warnings>*

Proposition 65 and its regulations are posted at:

*<https://oehha.ca.gov/proposition-65/law/proposition-65-law-and-regulations>*

To give Meziere notice of an alleged violation of California Health and Safety Code Section 25249.5 or 25249.6, you must send notice to:

*[meziere@meziere.com](mailto:meziere@meziere.com)*